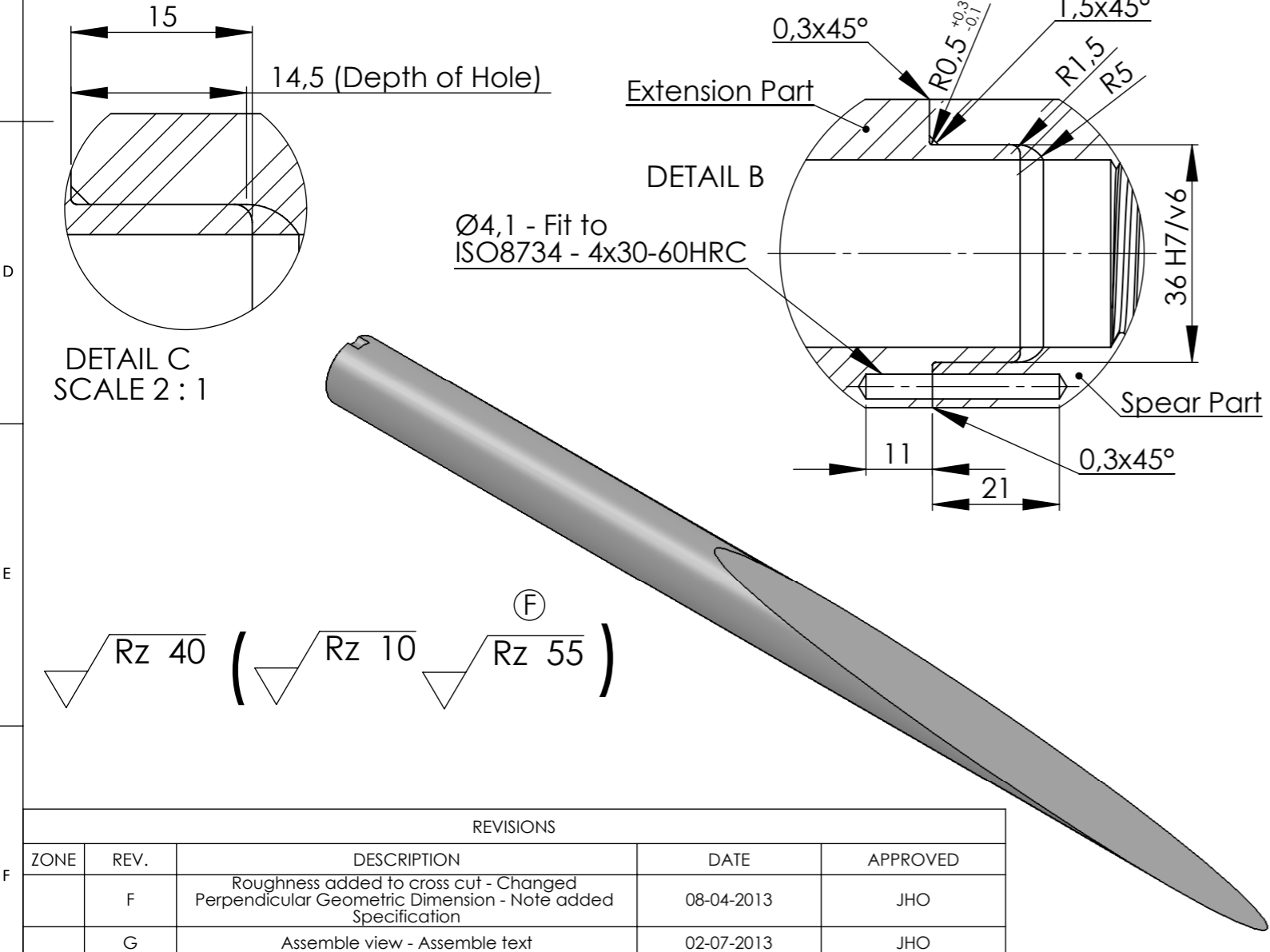


M30 Thread according to DIN 13-1 / DIN 336  
 Thread tolerance according to DIN/ISO 965

**Note:** (F) (G)  
 Alternative material is allowed according to the following conditions:  
 If alternative steel type is chosen, it has to be approved by SSP Technology in a written statement. Such approval will be based on certificates and data sheets, which clarifies that the mechanical data is the same or higher than the values of the original specified steel type. All necessary data from the steel manufacturer have to be delivered to SSP Technology, before the alternative steel type can be evaluated and approved.

Detail B and C: The manufacturer has the option of manufacturing the Insert as one Item, or as split in two parts (Spear Part and Extension Part) assembled to one Item. If the split option is chosen by the manufacturer, it has to be manufactured according to Detail B and C shown on the drawing and dimensions marked with (\*) and specification: TD1037. Assembled inserts will be QA checked and measured according to the same tolerances as inserts manufactured in one part. The chosen option has to be stated in the documentation package.

Specification for Manufacturer: TD1037 (Machining) - TD1019 (Grit Blasting)  
 Specification for Customer: TD1042



<b>SSP TECHNOLOGY</b> <i>Catching the winds of Tomorrow</i>  GEMALVEJ 15A KIRKEBY DK-5771 STENSTRUP  PHONE: +4563244001 FAX: +4563244009  <b>PROPRIETARY AND CONFIDENTIAL</b> THE INFORMATION CONTAINED IN THIS DRAWING IS THE SOLE PROPERTY OF SSP TECHNOLOGY A/S. ANY REPRODUCTION IN PART OR A WHOLE WITHOUT THE WRITTEN PERMISSION OF SSP TECHNOLOGY A/S IS PROHIBITED.	<b>Drawn By:</b> LFR-ADMIN	<b>Date:</b> 24-05-2011	<b>Part No. (ERP):</b>		
	<b>Approved By:</b> JHO	<b>App. Date:</b> 02-07-2013	<b>Material:</b> 25CrMo4 V (See Note)		
	<b>Unless Otherwise Specified:</b> Dimensions Are In Millimeters Welding Quality as EN/ISO 5817 D		<b>Tolerance:</b> ISO 2768 C		
	<b>Description:</b> RTJ M30 Insert SSP Standard Insert				
<b>Last Rev. By:</b> LFR	<b>Last Rev. Date:</b> 02-07-2013	<b>Revision Note:</b> -			
<b>Drawing No.:</b> DLI000404	<b>Rev No.:</b> G	<b>Scale:</b> 1:1	<b>Weight:</b> 7.6 kg	<b>Size</b> A3	

REVISIONS				
ZONE	REV.	DESCRIPTION	DATE	APPROVED
	F	Roughness added to cross cut - Changed Perpendicular Geometric Dimension - Note added Specification	08-04-2013	JHO
	G	Assemble view - Assemble text	02-07-2013	JHO