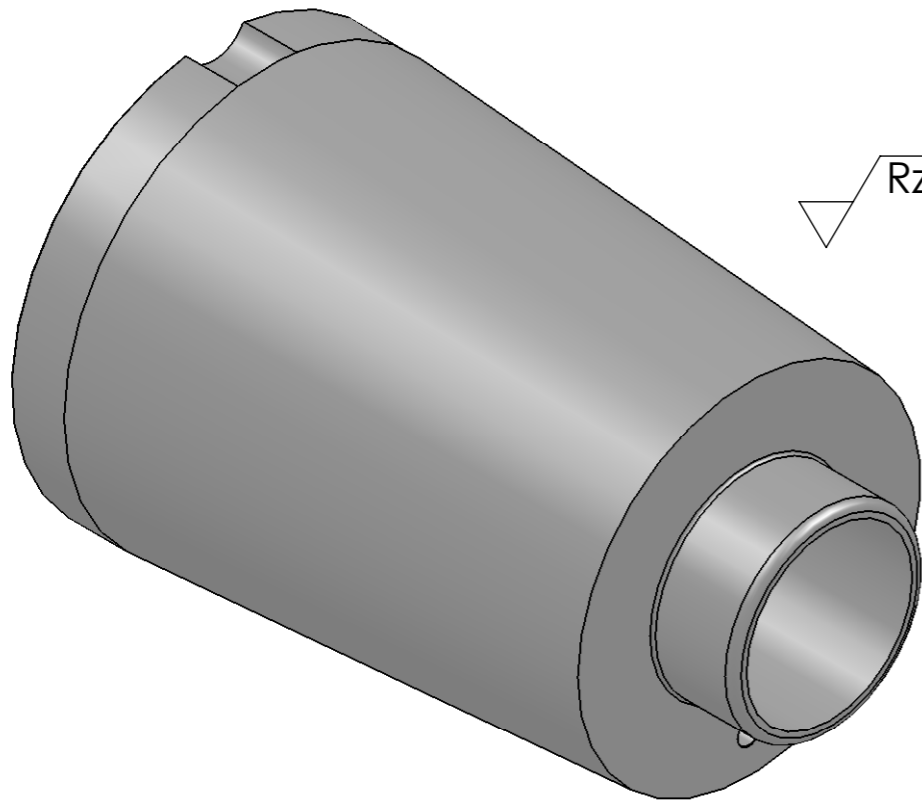


SECTION A-A

⊙ 4.1 ± 0.1 ∇ 11
 ⓐ ⓓ √ ∅ 4.3 X 90°, Near Side

ⓐ Position of hole see the assembly drawing (DLI000693) for details



∇ Rz 40 (∇ Rz 10)

Break Edges

Note:

Alternative material is allowed according to the following conditions:
 If alternative steel type is chosen, it has to be approved by SSP Technology in a written statement. Such approval will be based on certificates and data sheets, which clarifies that the mechanical data is the same or higher than the values of the original specified steel type. All necessary data from the steel manufacturer have to be delivered to SSP Technology, before the alternative steel type can be evaluated and approved.

- ⓐ Specification for Manufacturer: TD1037 (Machining)
- ⓓ Specification for Customer: TD1042

SSP TECHNOLOGY <i>Catching the winds of Tomorrow</i> GEMALVEJ 15A KIRKEBY DK-5771 STENSTRUP PHONE: +4563244001 FAX: +4563244009	Drawn By: LFR	Date: 15-06-2012	Part No. (ERP):		
	Approved By: JHO	App. Date: 04-04-2013	Material: 25CrMo4 V (See Note)		
	Unless Otherwise Specified: Dimensions Are In Millimeters Welding Quality as EN/ISO 5817 D		Tolerance: ISO 2768 C		
	Description: RTJ M30BF SSP Standard Insert				
PROPRIETARY AND CONFIDENTIAL THE INFORMATION CONTAINED IN THIS DRAWING IS THE SOLE PROPERTY OF SSP TECHNOLOGY A/S. ANY REPRODUCTION IN PART OR A WHOLE WITHOUT THE WRITTEN PERMISSION OF SSP TECHNOLOGY A/S IS PROHIBITED.	Last Rev. By: LFR	Last Rev. Date: 04-04-2013	Revision Note: -		
	Drawing No.: DLI000692	Rev No.: D	Scale: 1:1	Weight: 2.5 kg	Size: A3

REVISIONS				
ZONE	REV.	DESCRIPTION	DATE	APPROVED
	B	∅34h6 changed to ∅34v6	07-11-2012	JHO
	C	∅4.2 change to ∅4.1 and position according to assembly	04-12-2012	JHO
	D	∅34 changed to ∅36 - Total length 110 changed to 115 - ∅4.1 depth depth changed to 11 - Roughness changed - Note added Specification	04-04-2013	JHO